

## SGG STADIP ARTE

### Symbiosis of Art and Glass

#### GENERAL INFO

**STADIP ARTE** allows the transformation of a multitude of artistic and creative ideas. From the stroke of a paintbrush to photo-realistic images, from Graphic data to colour graduations in all shades – the unrestricted use of glass is made possible. Colour definitions to RAL, Pantone etc. Can be achieved. But also the Blue of the ocean or the subtle yellow of the afternoon sun. Every desirable colour can be achieved.

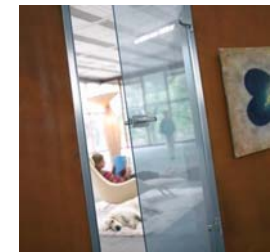
STADIP ARTE is a laminated safety glass of 2 x 4 mm PLANIDUR DIAMANT, a colour-free, extra-clear Float glass without the normal green hue which allows exceptional colour rendering. Differing techniques allow almost any design or image to be reproduced.

To avoid risk of thermal breakage, the individual sheets are made of 2 x PLANIDUR (heat-strengthened glass) **as standard**.

Maximum protection from damage, wear and tear and ageing by means of the UV absorbing PVB interlayer. This makes a preferable product over digital printing on glass.



Pdf-Brochure STADIP ARTE



### STADIP ARTE S – individual design

Digital data such as photos, graphics, Logos but also hand-finished copies of originals can be used to produce architectonic-artistic unique objects.

Individual designs can create atmospheres from conservative to distinct and powerful motives.

The use of transparent colours for partitions, entrances or facades or the use of opaque white backgrounds for images or wall cladding accentuate the exclusivity of your Corporate Identity in its surroundings.

Principle samples for visualisation of the technical possibilities can be ordered.

Maximum production size 2000 x 4000 mm

### STADIP ARTE C - non individual design

A number of designs with particular aesthetics have been selected for STADIP ARTE C in order to offer a neonomic solution for creative glass design. All offered designs are hand-finished and possess not only the optical quality of e.g. Alabaster, but are also different from sheet to sheet just like natural stone.

Samples can be ordered.

Maximum production size 1500 x 3000 mm



Principle – Sample  
STADIP ARTE S 1

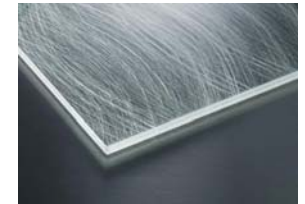


Principle – Sample  
STADIP ARTE S 2

### Extract – STADIP ARTE C Collection



STADIP ARTE C 12  
Alabaster white  
translucent



STADIP ARTE C 10  
translucent





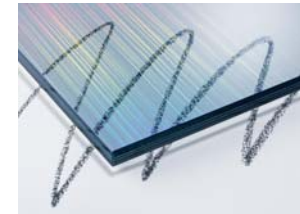
## STADIP ARTE H – non individual design

Holograms characterise STADIP ARTE H. Subtle Spectral colours occur through differing light incidence and vary in colour and intensity according to the viewing angle.

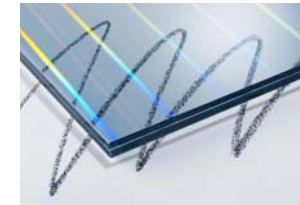
Glass is experienced in a new and exciting way.

Samples can be ordered.

Maximum production sizes      1400 x 3600 mm in thickness 8 / 10 / 12 mm  
1400 x 5200 mm or 1200 x 5800 mm in thickness  $\geq$  16 mm



STADIP ARTE H 3



STADIP ARTE H 4



STADIP ARTE H 5

# SGG STADIP ARTE

## Symbiosis of Art and Glass

### APPLICATIONS

- Signage
- Spandrel/Parapet
- Facade systems
- Handrails
- Roofs
- Glass louvres
- Furniture
- Entrances
- Partitions
- External cladding
- Internal cladding





## SGG STADIP ARTE

### Symbiosis of Art and Glass

#### TECHNOLOGY

STADIP ARTE S, C, M and H are based on different colour application processes depending on the specification of design and are generally manufactured into laminated safety glass using PvB interlayers.

#### Interlayers

STADIP ARTE C            0,76 mm PvB clear or white opaque

STADIP ARTE S, M, H    1,52 mm PvB clear or white opaque

Combinations with coloured interlayers [[>](#)] ([Link STADIP COLOR](#))

#### Colours and Design specifications

Ideally you should use digitally generated data which can be transmitted to us using Corel Draw 9 or 10, Adobe Illustrator or Photoshop 5.5. The design colours are thereby already defined by you.

The colours in specification of geometric shapes (e.g. Logos) can be taken from colour systems such as RAL, Pantone and NCS.

Prior to final production, a sample which shows a full-size (1:1) extract of the image, is obligatory. The desired resolution must be defined when ordering the sample. Sample size is approx. 50 x 50 cm.

## Effects

Fantasy knows no boundaries – with differing effects the glass can be seen in endless variations. Holograms in their spectral colours, Alabaster in its fragile translucency, Metallic-effects with 3D-appearance or the structure of Rice paper etc. Give glass an unknown life.

The ability to vary colour intensity and employ different coloured glass substrates (e.g. etched or mirrored glass) allows completely individual effects to be achieved.

Even photos with differing appearances – from an opaque look on the outside and from inside sepia to grey transparency – can be achieved with STADIP ARTE.

### (a) Dimensions

STADIP ARTE S	max. 2000 x 4000 mm
STADIP ARTE C	max. 1500 x 3000 mm
STADIP ARTE M	1400 x 3600 mm in thickness 8 / 10 / 12 mm 1400 x 5200 mm or 1200 x 5800 mm in thickness $\geq$ 16 mm Maximum width of STADIP ARTE M 1 1800 mm
STADIP ARTE H	1400 x 3600 mm in thickness 8 / 10 / 12 mm 1400 x 5200 mm or 1200 x 5800 mm in thickness $\geq$ 16 mm

## (b) Application technical notes

Safety glass characteristics to EN 12543-2 and Ö-NORM B 3710:

- When used for structural glazing STADIP ARTE must have mechanical restraints.
- A complete self-weight support is to be achieved using prescribed setting blocks.
- Injury protection and splinter-free  
At mechanical overload by impact the broken pieces of glass remain attached to the PvB interlayer and the sheet typically remains in one piece. Similar to the windscreen of a car, the risk of injury is minimised.
- Overhead glazing  
The City of Vienna directive MA 64-39/2004 sees STADIP as suitable for overhead glazing.
- Guarding  
Free-standing glass edges are not permissible.  
In accordance with the City of Vienna directive MA 64-39/2004 STADIP ARTE can - under the condition that it has total perimeter framing - be used as glass for guarding.
- Structural stability  
An increased structural stability is offered by STADIP ARTE of two sheets of PLANIDUR (heat Strengthened glass).
- Thrown Ball resistance  
STADIP ARTE with a glass thickness of 2 x 4 mm and PvB interlayer fulfils the requirements of DIN 18032 Part 3.
- Tolerances [[>](#)] ([Link Handbook Tolerancen Chap. STADIP ARTE](#))



## (c) Finishing

### 1. Edge working

Rectangular sheets of STADIP ARTE have each sheet finished with Polished edges as standard.

### 2. Drilled holes and cut-outs

With the exception of STADIP ARTE S, drilled holes, edge and corner cut-outs are possible.

Production restrictions of hole location must be considered.

## (d) Marking

Standard marking for STADIP ARTE as laminated safety glass of 2 x HS.

### pdf – Standard marking and location

View from outside:



### Polished edge (KPO)

*Term for a flat ground edge which has been polished to a fine, shiny surface. The structure of the grind is allowable but must not be matt.*

←x→ Pdf – production restrictions on hole locations **STADIP**



pdf – Standard marking and location **STADIP ARTE**

Standard mark location:

Viewed from outside approx. 45 x 45 mm from the left bottom corner to centre line.

**(e) Certification**

Harmonisation certification

STADIP Laminated safety glass fulfils the German Building Regulation A Part 1

Nr. 11.8



Pdf – Harmonisation certification

## SGG STADIP ARTE

### Symbiosis of Art and Glass

#### GLASS TYPES

STADIP COLOR	coloured Laminated safety glass
LITE-WALL MONO/ISO	point-fixed Glass
DIAMANT	Low-Iron glass
COOL-LITE ST 150	Coated Solar control glass (hard coating)
MIRASTAR	Mirrored glass
PARSOL	Tinted Float glass in colours grey, green, bronze, blue
SATINOVO <sup>1)</sup>	etched glass
VISION-LITE PLUS <sup>1)</sup>	anti-reflective Gläser
ANTELIO <sup>1)</sup>	Coated Solar control glass (hard coating)
COOL-LITE <sup>1)</sup> , PLANISTAR <sup>1)</sup>	combined Solar and thermal control coatings
PLANITHERM <sup>1)</sup>	low-e Thermal protection (soft coating)

<sup>1)</sup> Coating not towards the interlayer

## SGG STADIP ARTE

### Symbiosis of Art and Glass

#### GLASS TYPES

STADIP COLOR	Product start page Eckelt HP
LITE-WALL MONO/ISO	Product start page Eckelt HP
DIAMANT	<a href="http://www.saint-gobain-glass.com/de/b01.asp?product_id=342">http://www.saint-gobain-glass.com/de/b01.asp?product_id=342</a>
COOL-LITE ST 150	<a href="http://www.saint-gobain-glass.com/de/b01.asp?product_id=275">http://www.saint-gobain-glass.com/de/b01.asp?product_id=275</a>
MIRASTAR	no Link
PARSOL	<a href="http://www.saint-gobain-glass.com/de/b01.asp?product_id=279">http://www.saint-gobain-glass.com/de/b01.asp?product_id=279</a> Farben
SATINOVO <sup>1)</sup>	<a href="http://www.saint-gobain-glass.com/de/b01.asp?product_id=306">http://www.saint-gobain-glass.com/de/b01.asp?product_id=306</a>
VISION-LITE PLUS <sup>1)</sup>	<a href="http://www.saint-gobain-glass.com/de/b01.asp?product_id=349">http://www.saint-gobain-glass.com/de/b01.asp?product_id=349</a>
ANTELIO <sup>1)</sup>	<a href="http://www.saint-gobain-glass.com/de/b01.asp?product_id=1208">http://www.saint-gobain-glass.com/de/b01.asp?product_id=1208</a>
COOL-LITE <sup>1)</sup>	no Link
PLANITHERM <sup>1)</sup>	<a href="http://www.saint-gobain-glass.com/de/b01.asp?product_id=282">http://www.saint-gobain-glass.com/de/b01.asp?product_id=282</a>

## SGG STADIP ARTE

### Symbiosis of Art and Glass

#### DOWNLOADS

Brochure STADIP ARTE

Directive MA 64-39/2004 [Glass in Buildings](#)

Thrown Ball safety STADIP

Edge working

Handbook Tolerances

Production restrictions on hole locations [STADIP](#)

Standard marking and location [STADIP ARTE](#)

Harmonisation certification