



Unit 55 – 2495 DAVIES AVE.
Port Coquitlam, BC V3C 0B2

Phone: 778.285.8530
Fax: 778.285.8520

LITEFLOOR® GLASS FLOORS, STAIRS & WALKWAYS



LITEFLOOR R 46/3 with non-slip



LITEFLOOR CL 28/3 with blue opaque interlayer



LITEFLOOR CL 24/3 clear

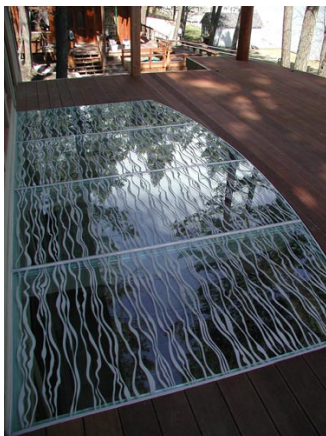
As the leading single source manufacturer of structural glass panel systems, LITEFLOOR® offers unique and innovative product lines that can be designed into virtually any type of application to meet almost all structural, slip resistant and aesthetic design criteria.

LITEFLOOR is a walkable laminated safety glass with optional slip-resistant properties and/or structural integrity. Depending on the respective particular requirements of the application there are two types (LITEFLOOR R and CL) and various compositions available:

LITEFLOOR FRIT A laminated glass of usually two sheets of structural layers of glass with a third slip-resistance partially transparent / translucent top layer. Coloured, transparent or opaque interlayers are also optional.

LITEFLOOR GRIT Special Slip-resistance using clear glass beads infused into the glass.

LITEFLOOR CL With out slip-resistance A laminate of two or more sheets of annealed, heat-strengthen or tempered glass without slip-resistance surface. Vision-protection can be achieved using opaque interlayer options.



Structural Criteria:

Structural Concept:

LITEFLOOR laminated safety glass typically comprises three single sheets. The (two) lower sheets withstand the normal service loads and are of Float glass or heat-strengthened glass (PLANIDUR). The upper sheet provides slip-resistance through its patented coating and is heat-strengthened.

Structural stability when overloaded:

The single sheets are bonded together, even in breakage, by a highly tear-resistant interlayer. The bond remains intact. A reduction in structural stability remains, depending on the type and amount of damage.

Examination of such structural stability (following intentional damage) has been carried out on LITEFLOOR R. The results of these investigative tests are to be considered when applying for construction approval from the regulating authority

Evaluation Diagram 4-side line supported

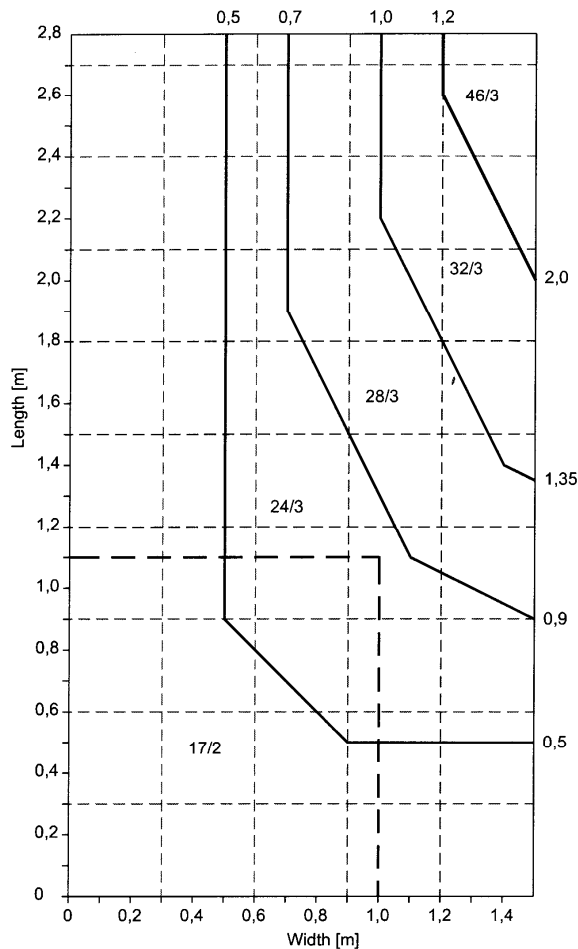
Self-weight + Service load $p = 4 \text{ kN/m}^2$

- all σ TVG = 29 N/mm²
- all σ Float = 12 N/mm²
- all $f = L/200$
- without lamination action
- Top sheet not structural (except 17/2)

SGG LITE-FLOOR R
to ÖNORM B4012

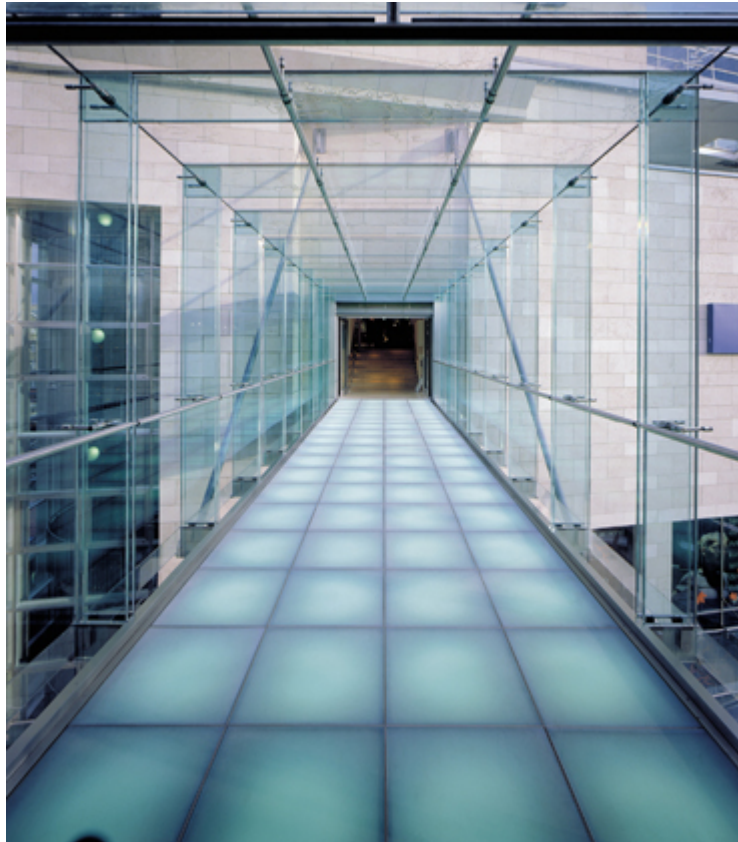
minimum size: 20 x 50 cm
maximum size: 150 x 220 cm

Evaluation example: - - -
Sheet 1,0 x 1,1 m
Application Type 24/3



Criteria for the structural requirements are derived from the spans between the supporting members. Depending on the supporting design LITEFLOOR laminated glass can be supported on two or more points, two-sides, or all four sides of the glass. See support [design detail](#). The dimension between the supporting edges or points is used to determine glass type and thickness.

Uniform Building Codes for floor loading are also used to determine the structural glass composition. Live loads, dead loads and point loads requirements are project specific.



LITEFLOOR GRIT - Dipped Slip-resistant Surface *NEW****

The LITEFLOOR GRIT surface uses glass beads which are infused into the top surface of the glass with heat in a special kiln. Tested in accordance to ASTM-C1028 for slip resistance. Glass can be clear or diffused using pattern or etched glass.



LITEFLOOR FRIT Slip-Resistant coatings

LITEFLOOR FRIT is Special hardwearing slip-resistant screen print (specialty frit - enamel ceramic paint with sand particles), which is fused to the top layer of the glass, is available in standard colours and screen-print patterns. This screen print and orientation can also be customized. Tested in Accordance to ASTM-C1028 for slip-resistance

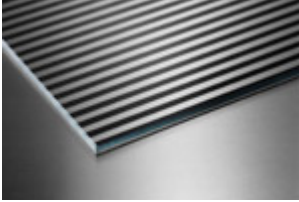


Screen-Print Patterns

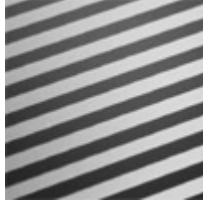
LITEX is a partially enameled tempered safety glass that is laminated to the structural element of LITEFLOOR. Litex is non-fading, light- and weather resistant, and resistant to temperature fluctuations.

Partial transparency is achieved by using the Litex Standard designs, whereby the decorative effect can be enhanced depending on the design and colour. Additional Designs can be found in our brochure “Emalit / Seralit”. You can request this brochure at: info@greenliteglass.com

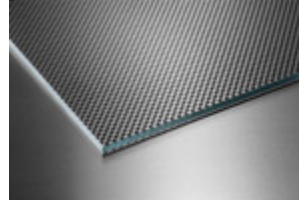
It is also possible to produce custom screen-prints. Custom screen-prints must be submitted via CAD design format.



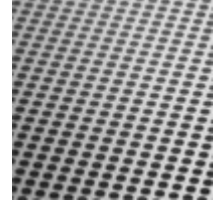
Design-Code: 511



Detail



Design-Code: 513

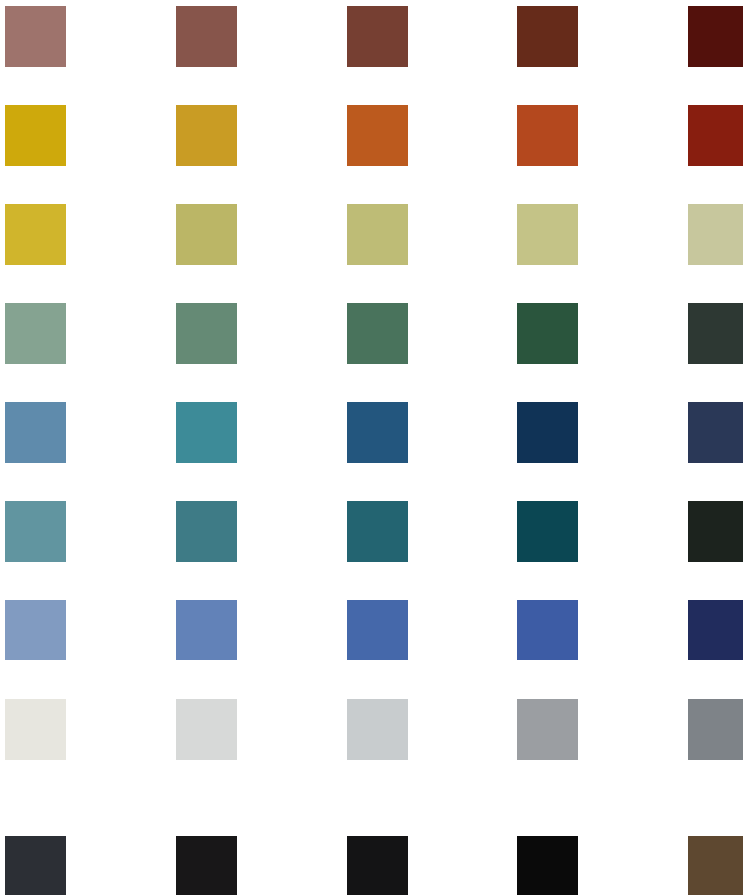


Detail

Slip Resistant Screen-Print Colour Options

Standard Design: Standard colour 7022-5WS (brown)

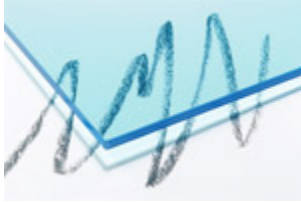
Emalit Custom colours possible:



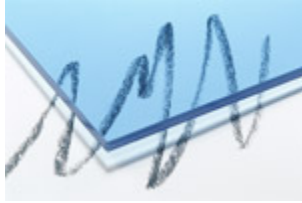
Transparent or Opaque Coloured Interlayer:

Aesthetics can be further customized by the introduction of a transparent coloured interlayer.

Transparent



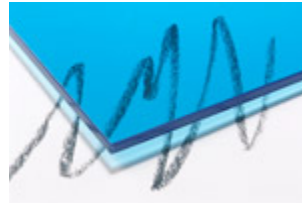
Colour: Blue-D



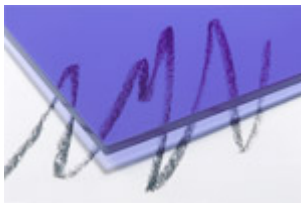
Colour: Blue-DBD



Colour: Blue-KBWB



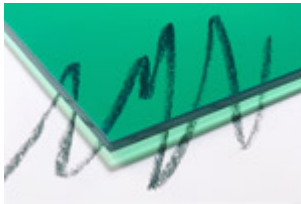
Colour: Blue-KBWF



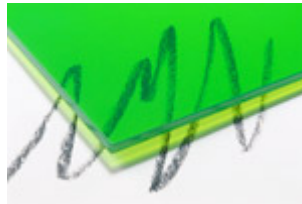
Colour: Red-Blue-KWU



Colour: Grey-FF



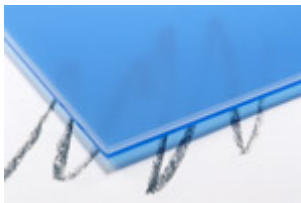
Colour: Green-FWXF



Colour: Green-KHWH

For sensitive applications, obscurity can be achieved using a translucent PVB interlayer.

Translucent



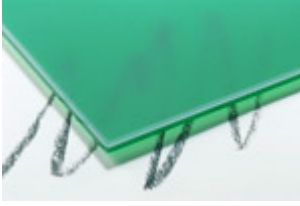
Colour: Blue-MBWB matt



Colour: Rose-MUU matt

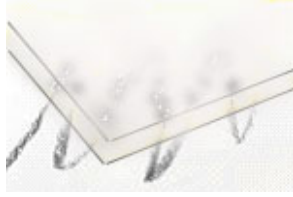


Colour: Orange-MUX matt



Colour: Green-MFWXT m

Colour: Yellow-MH matt



Colour: Diffused White