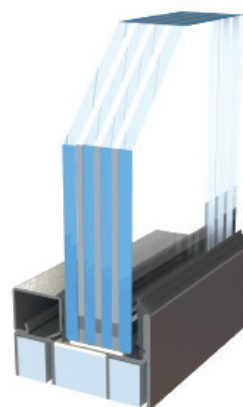


CONTRAFLAM® STRUCTURE 60

Fire-Rated Clear Tempered Safety Glass for Interior Wall and Door Applications

CLASSIFICATION

PRODUCT FEATURES



TECHNICAL SPECIFICATIONS

Fire Rating	60 Min. Fire-Resistance-Rated		
Testing / Standard Conformity	UL 263, NFPA 251, ASTM E119, CAN/ULC-S101		
Building Code Marking	W-60		
Impact Safety Rating	CPSC 16CFR, 1201-Cat II; CAN/CGSB-12.1-M; ANSI Z97.1		
Nominal Thickness	1-1/4" (31 mm)		
Thickness Tolerance	+1/8" to -1/16" (+3 mm to -1.5 mm)		
U Value (BTU/hr* sq. ft./°F)	0.70		
STC Rating (dB)	42		
Weight (lbs/sq.ft²; kg/m²)	14 (68.5)		
Visible Light Transmission	≈ 83%		
Groove (in; mm)	Depth: 3/4" (20 mm)	Width: 1-5/8" (41 mm)	

MAXIMUM DIMENSIONS	Window, Transom, Sidelight	Door Non-Temp Rise	Door Temp Rise
Maximum Exposed Height (in; m)*	138-1/2 (3.52)	N/A	N/A
Maximum Exposed Width (in; m)*	138-1/2 (3.52)	N/A	N/A
Maximum Exposed Area (in²; m²)*	7,574 (4.89)	N/A	N/A

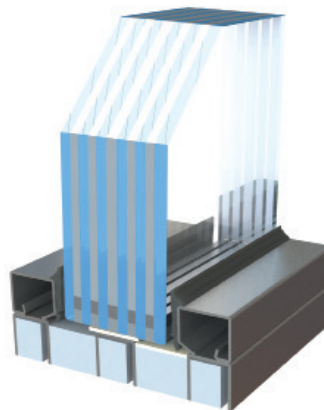
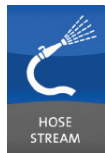
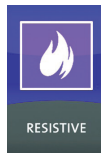
Rev. 11.11.15 The information published in this document is correct at the time of going to press. Such information may be subject to change and products may be modified.

CONTRAFLAM® STRUCTURE 120

Fire-Rated Clear Tempered Safety Glass for Interior Wall Application

CLASSIFICATION

PRODUCT FEATURES



TECHNICAL SPECIFICATIONS

Fire Rating	120 Min. Fire-Resistance-Rated		
Testing / Standard Conformity	UL 263, NFPA 251, ASTM E119, CAN/ULC-S101		
Building Code Marking	W-120		
Impact Safety Rating	CPSC 16CFR, 1201-Cat II; CAN/CGSB-12.1-M; ANSI Z97.1		
Nominal Thickness	2-1/16" (52 mm)		
Thickness Tolerance	+1/8" to -1/16" (+3 mm to -1.5 mm)		
U Value (BTU/hr* sq. ft./°F)	0.62		
STC Rating (dB)	46		
Weight (lbs/sq.ft²; kg/m²)	22.5 (110)		
Visible Light Transmission	≈ 80%		
Groove (in; mm)	Depth: 3/4" (20 mm)	Width: 2-5/16" (59 mm)	

MAXIMUM DIMENSIONS	Window, Transom, Sidelight	Door Non-Temp Rise	Door Temp Rise
Maximum Exposed Height (in; m)*	126 (3.20)	N/A	N/A
Maximum Exposed Width (in; m)*	126 (3.20)	N/A	N/A
Maximum Exposed Area (in²; m²)*	4,536 (2.93)	N/A	N/A

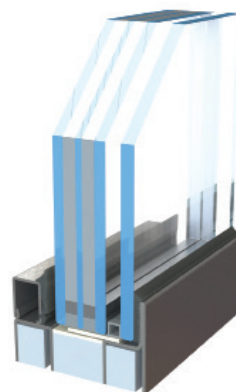
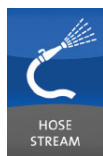
Rev. 11.11.15 The information published in this document is correct at the time of going to press. Such information may be subject to change and products may be modified.

CONTRAFLAM® STRUCTURE 60 IGU

Fire-Rated Clear Tempered Safety Glass for Exterior Wall and Door Applications

CLASSIFICATION

PRODUCT FEATURES



TECHNICAL SPECIFICATIONS

Fire Rating	60 Min. Fire-Resistance-Rated		
Testing / Standard Conformity	UL 263, NFPA 251, ASTM E119, CAN/ULC-S101		
Building Code Marking	W-60		
Impact Safety Rating	CPSC 16CFR, 1201-Cat II; CAN/CGSB-12.1-M; ANSI Z97.1		
Nominal Thickness	2" (51 mm)		
Thickness Tolerance	+1/8" to -1/16" (+3 mm to -1.5 mm)		
U Value (BTU/hr* sq. ft./°F)	0.70		
STC Rating (dB)	42		
Weight (lbs/sq.ft²; kg/m²)	16 (78)		
Visible Light Transmission	≈ 85%		
Groove (in; mm)	Depth: 3/4" (20 mm)	Width: 2-3/8" (60 mm)	

MAXIMUM DIMENSIONS	Window, Transom, Sidelight	Door Non-Temp Rise	Door Temp Rise
Maximum Exposed Height (in; m)*	138-1/2 (3.52)	N/A	N/A
Maximum Exposed Width (in; m)*	138-1/2 (3.52)	N/A	N/A
Maximum Exposed Area (in²; m²)*	7,574 (4.89)	N/A	N/A

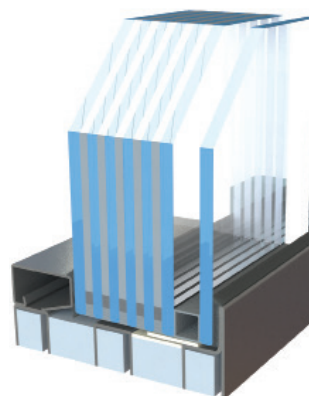
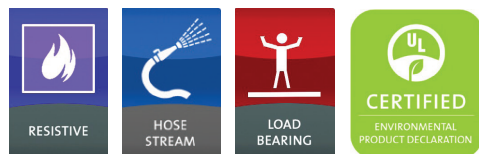
Rev. 11.11.15 The information published in this document is correct at the time of going to press. Such information may be subject to change and products may be modified.

CONTRAFLAM® STRUCTURE 120 IGU

Fire-Rated Clear Tempered Safety Glass for Exterior Wall Application

CLASSIFICATION

PRODUCT FEATURES



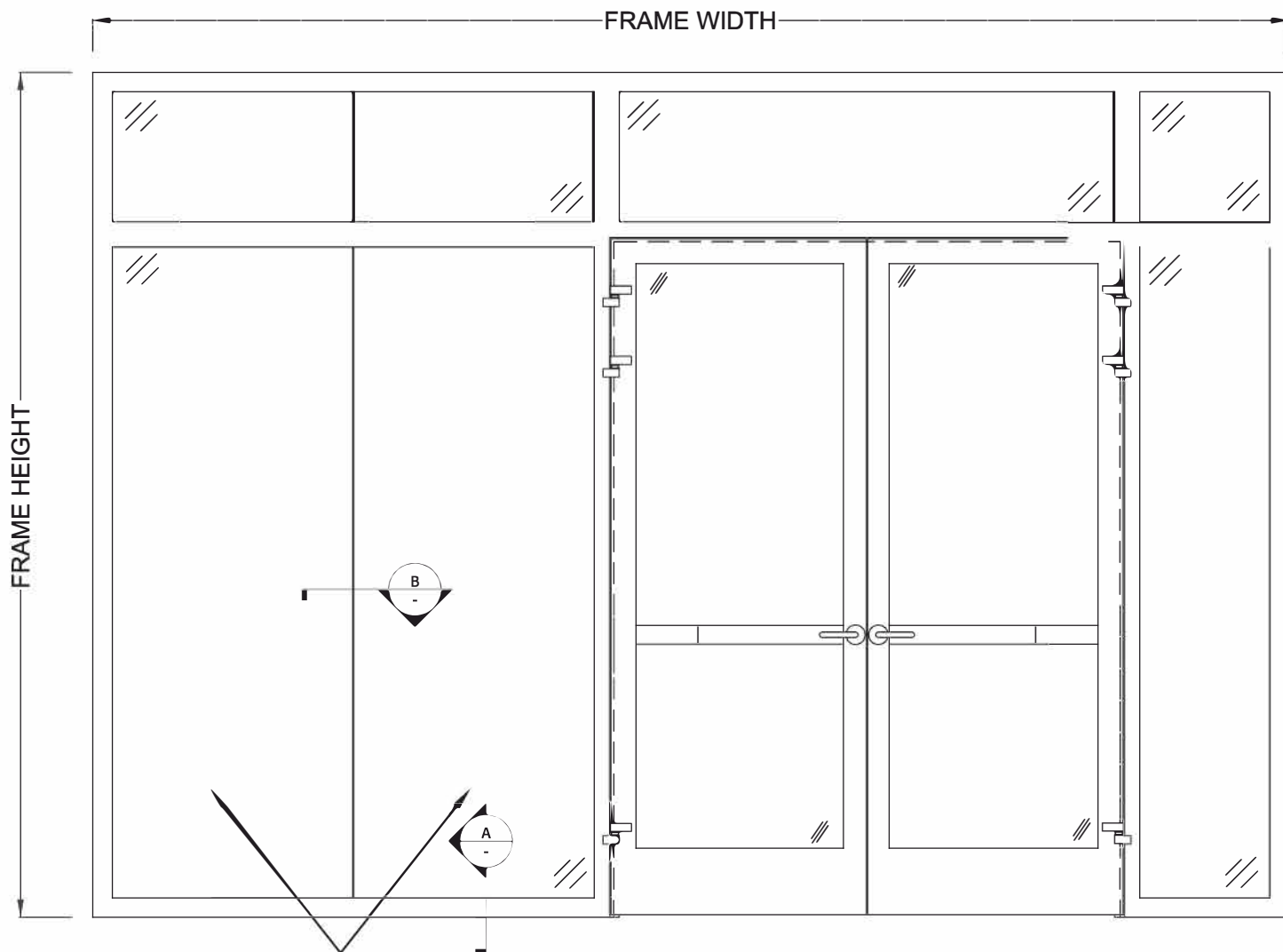
TECHNICAL SPECIFICATIONS

Fire Rating	120 Min. Fire-Resistance-Rated		
Testing / Standard Conformity	UL 263, NFPA 251, ASTM E119, CAN/ULC-S101		
Building Code Marking	W-120		
Impact Safety Rating	CPSC 16CFR, 1201-Cat II; CAN/CGSB-12.1-M; ANSI Z97.1		
Nominal Thickness	2-13/16" (71 mm)		
Thickness Tolerance	+1/8" to -1/16" (+3 mm to -1.5 mm)		
U Value (BTU/hr* sq. ft./°F)	0.62		
STC Rating (dB)	46		
Weight (lbs/sq.ft²; kg/m²)	25 (122.1)		
Visible Light Transmission	≈ 80%		
Groove (in; mm)	Depth: 3/4" (20 mm)	Width: 3-1/16" (78 mm)	

MAXIMUM DIMENSIONS	Window, Transom, Sidelight	Door Non-Temp Rise	Door Temp Rise
Maximum Exposed Height (in; m)*	126 (3.20)	N/A	N/A
Maximum Exposed Width (in; m)*	126 (3.20)	N/A	N/A
Maximum Exposed Area (in²; m²)*	4,536 (2.93)	N/A	N/A

Low iron glass available upon request.

Rev. 11.11.15 The information published in this document is correct at the time of going to press. Such information may be subject to change and products may be modified.



CONTRAFLAM 60 STRUCTURE
W/ FLUSH JOINT

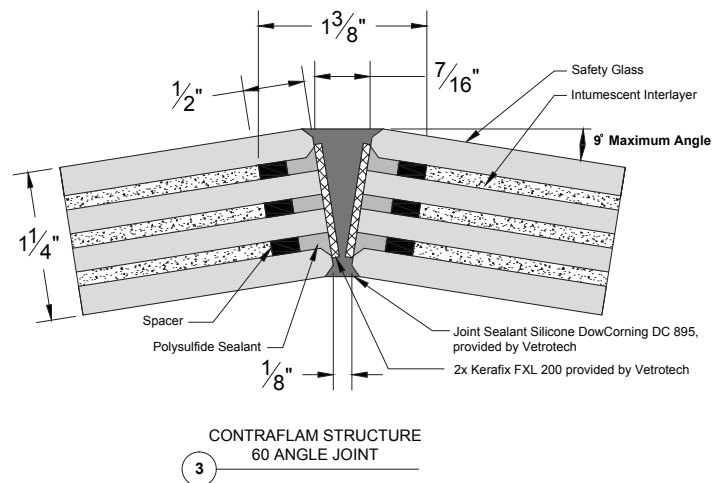
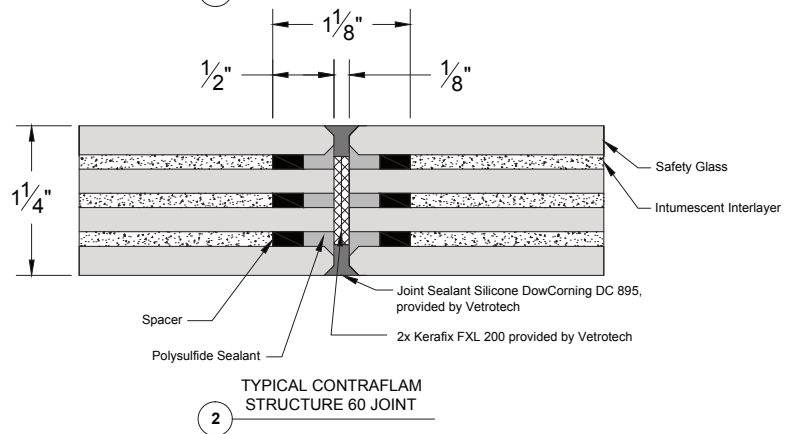
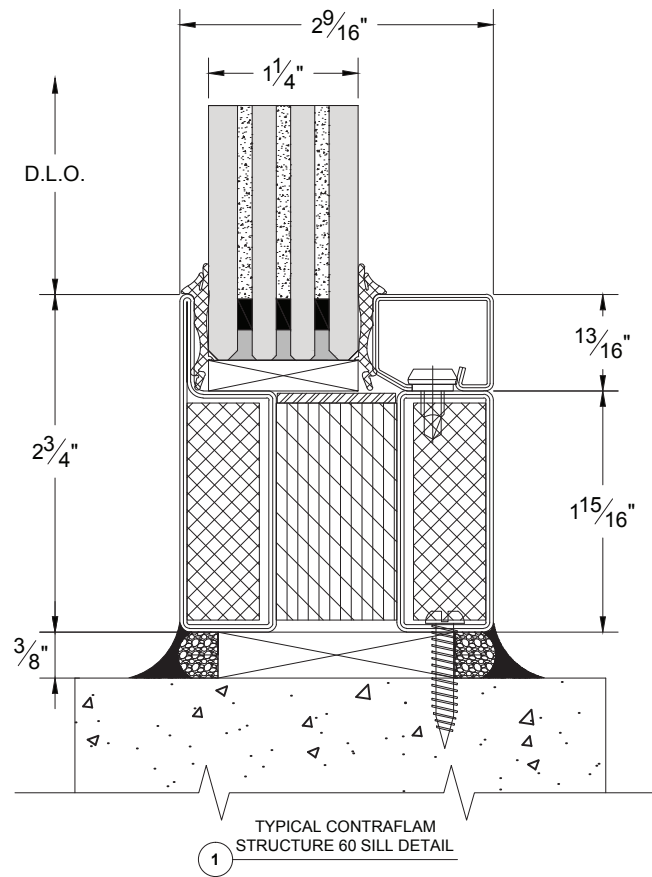
vetrotech
SAINT-GOBAIN

2108 B STREET NW
SUITE 110
AUBURN, WA 98001

PHONE: 888.803.9533
FAX: 253.333.5166
www.vetrotechusa.com

DESCRIPTION

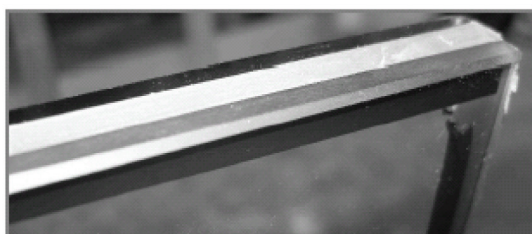
VDS 60 WALL ASSEMBLY WITH
CONTRAFLAM STRUCTURE 60 AND
VDS 60 PAIR OF DOORS



Installation Steps



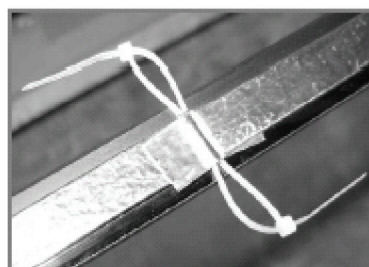
- Clean the glass edges to be sealed
- Remove excess polysulfide by razor blade / steel wool (grade 00)



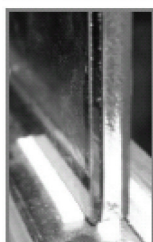
- Clean the glass edges to be sealed
- Remove excess polysulfide by razor blade
- Clean glass edge with methylated spirit or ethyl alcohol
Do not use: glass cleaning agent, benzene, toluene, isopropanol or other solvents!



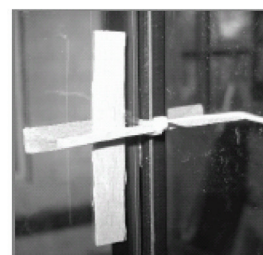
- Apply KERAFIX intumescent tape on vertical glass edge
- Ensure the tape is in center position



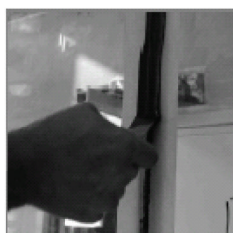
- Insert / apply cable straps on edges to be sealed
- Use them for later adjustment of panes



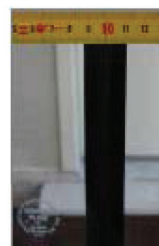
- Place glass panes on setting blocks



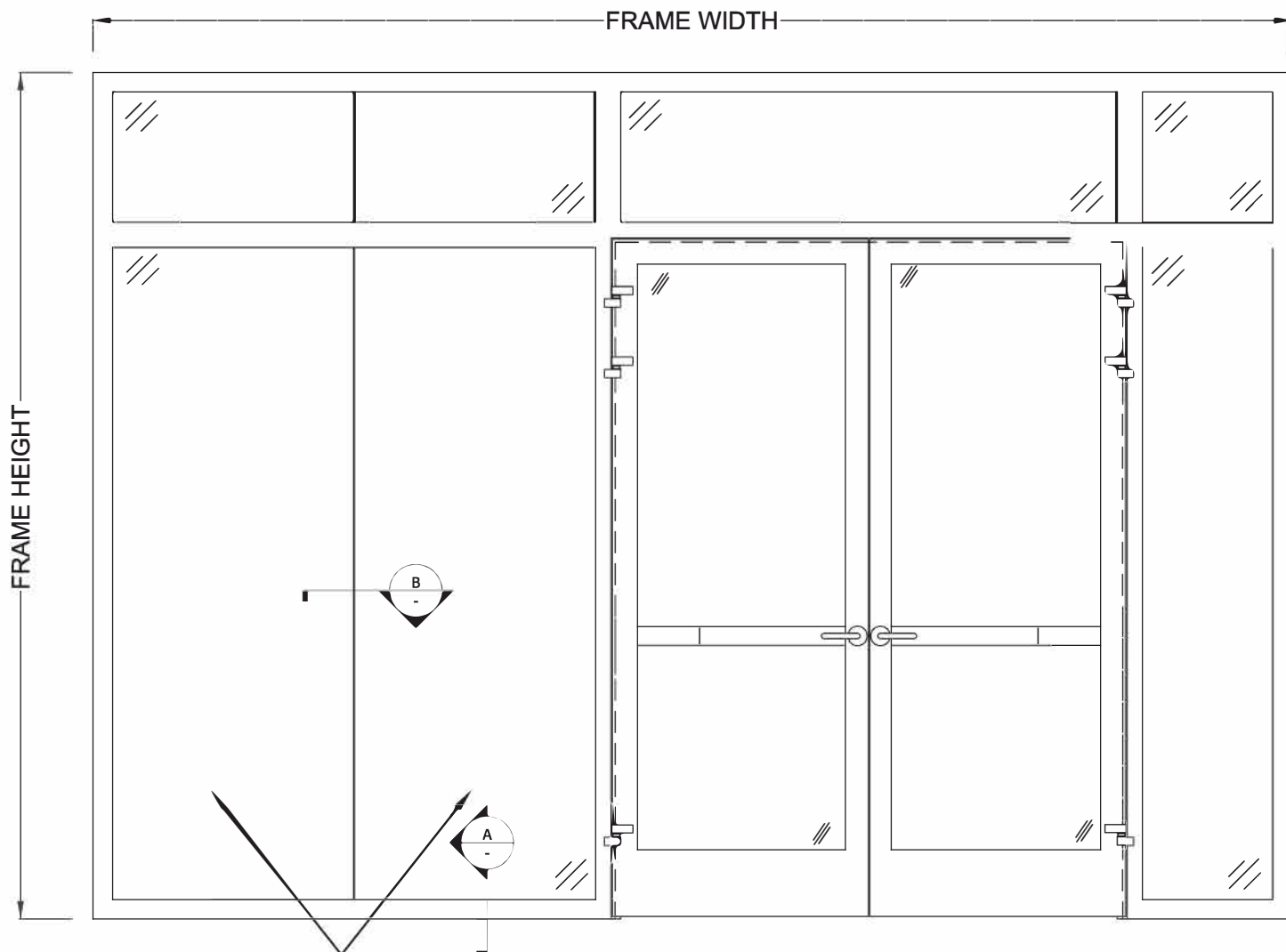
- Install further glass panes and adjust/align with cable straps



- Inject Silicone into the joint and remove excessive material



- Check linearity and joint width over the entire height
- Adjust where required



CONTRAFLAM 120 STRUCTURE
W/ FLUSH JOINT

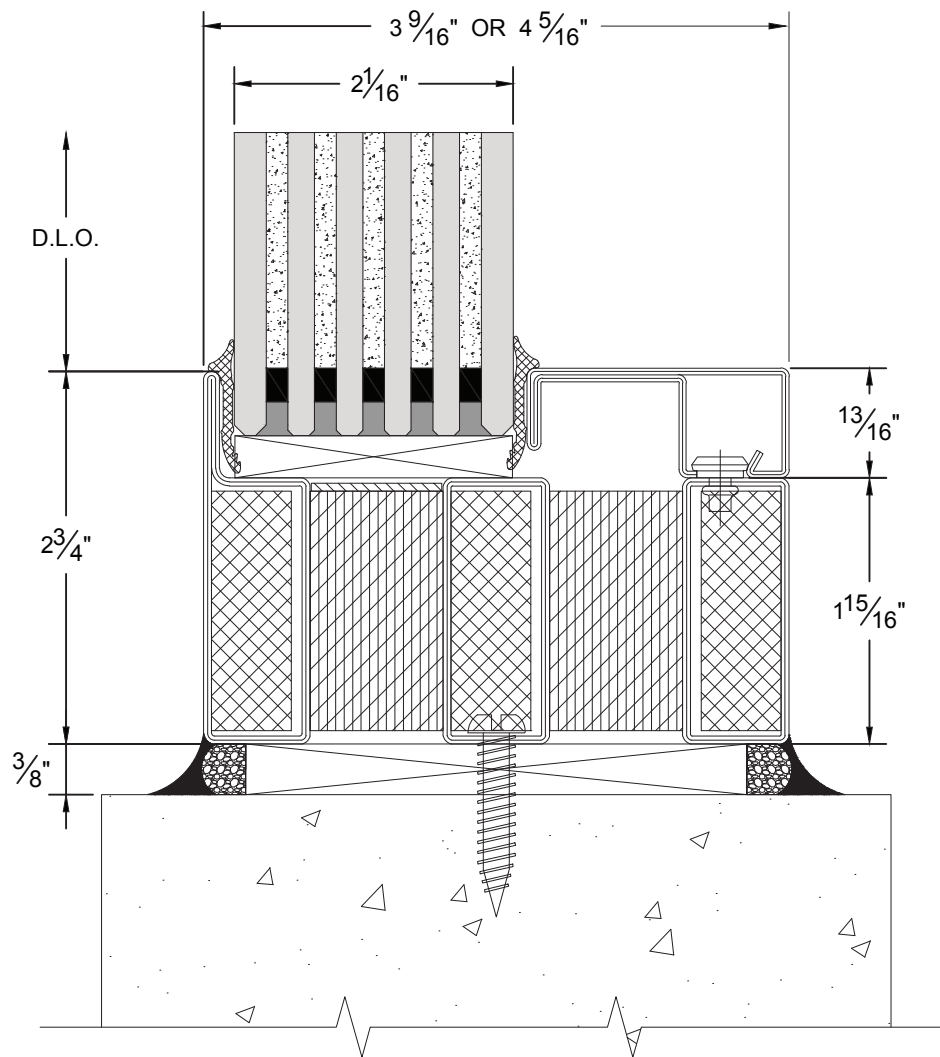
vetrotech
SAINT-GOBAIN

2108 B STREET NW
SUITE 110
AUBURN, WA 98001

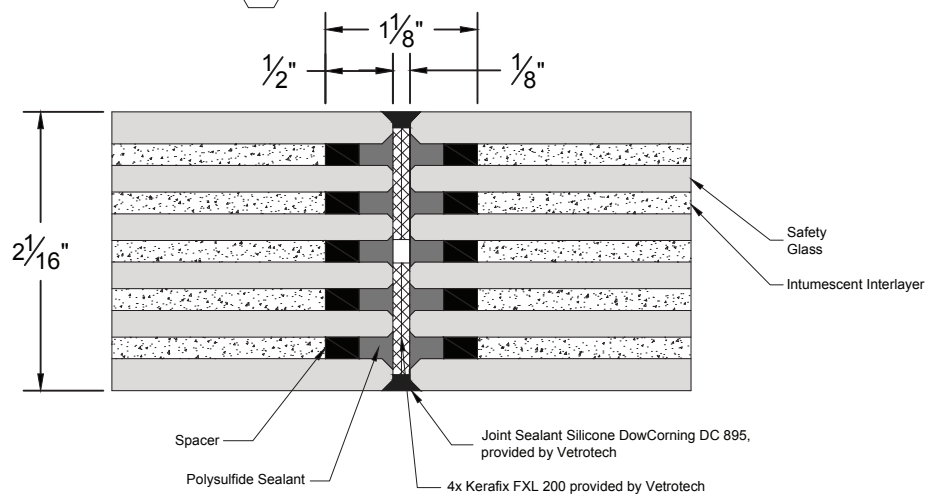
PHONE: 888.803.9533
FAX: 253.333.5166
www.vetrotechusa.com

DESCRIPTION

VDS 60 WALL ASSEMBLY WITH
CONTRAFLAM STRUCTURE 60 AND
VDS 60 PAIR OF DOORS



1
TYPICAL CONTRAFLAM
STRUCTURE 120 SILL DETAIL

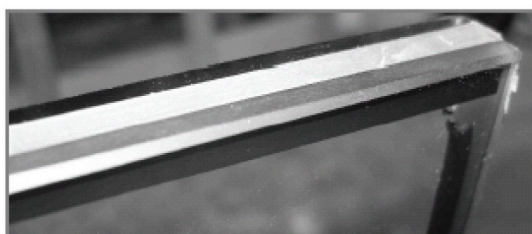


2
TYPICAL CONTRAFLAM
STRUCTURE 120 JOINT

Installation Steps



- Clean the glass edges to be sealed
- Remove excess polysulfide by razor blade / steel wool (grade 00)

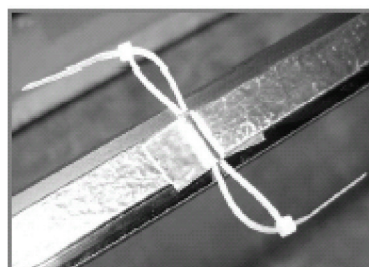


- Clean the glass edges to be sealed
- Remove excess polysulfide by razor blade
- Clean glass edge with methylated spirit or ethyl alcohol
Do not use: glass cleaning agent, benzene, toluene, isopropanol or other solvents!



Apply 2 pieces of KERAFIX intumescent tape on vertical glass edges

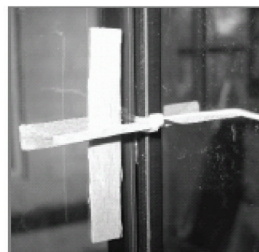
Ensure both pieces of tape are evenly positioned side by side vertically



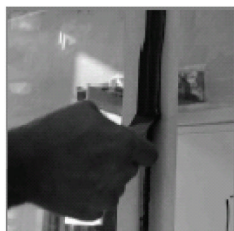
- Insert / apply cable straps on edges to be sealed
- Use them for later adjustment of panes



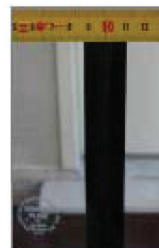
- Place glass panes on setting blocks



- Install further glass panes and adjust/align with cable straps



- Inject Silicone into the joint and remove excessive material



- Check linearity and joint width over the entire height
- Adjust where required