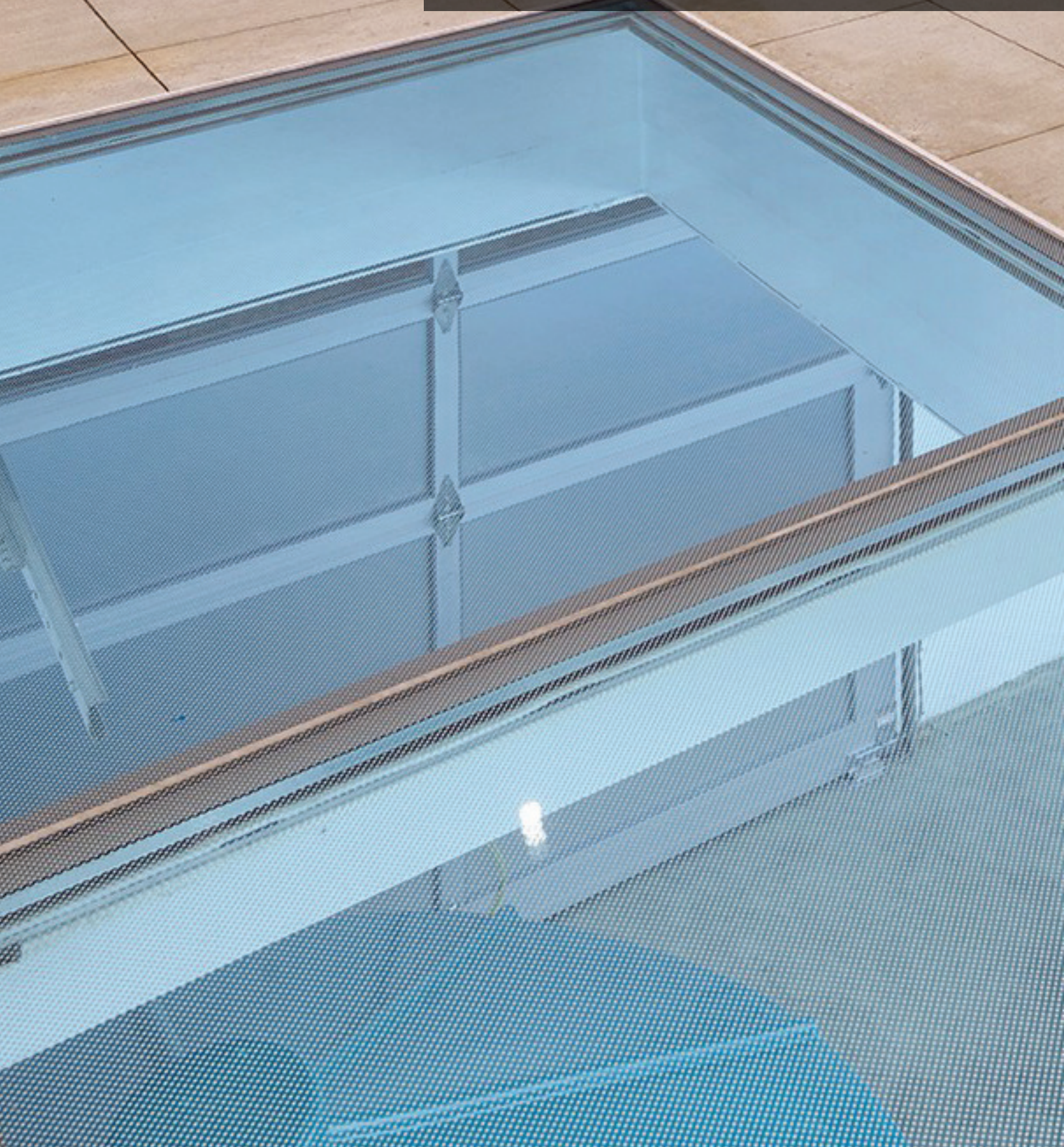


LITEFLAM® XT 60min

Multi-panel IGU system



LITEFLAM®

Fire-Rated Clear Glass Floors and Skylights

CLASSIFICATION



PRODUCT FEATURES

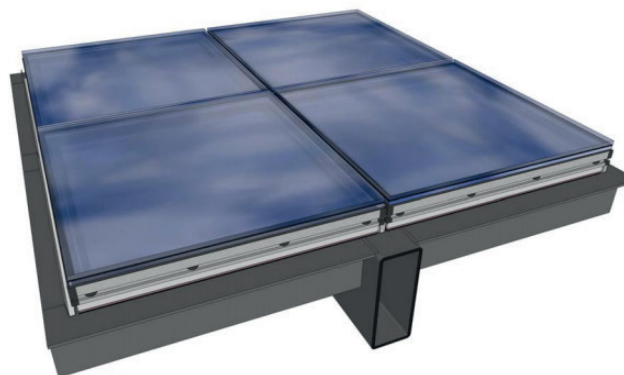
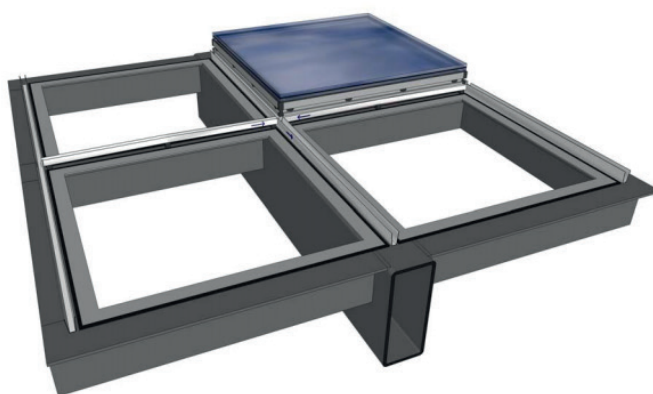
This advanced glass floor system is impact-resistant and fire-rated for 60 minutes - the only exterior glazed system insulated glass assembly for North America. GREENLITE Liteflam can be used as a durable, non-slip walking surface, and is approved for loads of 150 psf. Listed by South West Research Institute Laboratories (SwRI), the system is available for both interior and exterior applications.

TECHNICAL SPECIFICATIONS

Fire Rating	60, Minutes
US/Canadian Testing SwRI	ASTM E 119, UL 263, NFPA 251, CAN ULC-S101 SwRI FILE#01.07234.01.001,01.12694.01.101, and 01.02500.145
Impact Safety Rating	CPSC 16 1201 (CATEGORIES I & II)
Nominal Glass Thickness (in.; mm)	2-3/4" (70 mm)
Thickness Tolerance (in.; mm)	+1/8" to -1/16" (+3 mm to -1.5 mm)
Weight (lbs./ft. ² ; kg/m ²)	26 (11.7)

MAXIMUM DIMENSIONS

Rating	Application	Max Area of Glass (Sq. In.)	Max Width of Glass	Installation
60 Minutes	Horizontal	3481"	88.5"	Please request installation details



Rev. 1.1.16 The information published in this document is correct at the time of going to press. Such information may be subject to change and products may be modified.