

LITEFLOOR® IGU SYSTEM

PRODUCT FEATURES

LITEFLOOR is a walkable laminated safety glass with optional slip-resistant properties and/or structural integrity.

Depending on the requirements of the application there are two types (LITEFLOOR R and CL) and various compositions available.

Engineered to meet ASTM E2751 for Design Performance of Supported Laminated Glass, high volume foot traffic and extreme loading.

Units installed from above for safe easy installation.

Options include: sacrificial sheet, durable non-slip surfaces, Low E coatings, factory glazed units with sealed Air - spaces.

SPECIFICATIONS

Impact Safety Rating: CPSC 16 1201 (CATEGORIES I & II)

Tested Slip Resistance: ASTM F1679-00/ ANSI A326.3

Nominal Glass Thickness (in.; mm):

Double Glazed: 2-3/4" (70 mm)

Triple Glazed: 3-1/8" (80 mm)

Thickness Tolerance (in.;mm): +1/8" to -1/16" (+3mm to -1.5mm)

Weight (lbs./sqft. ;kg/m)

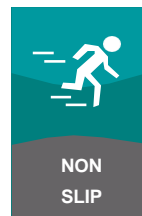
Double Glazed: 21lbs/sqft; 102 kg/sqm

Triple Glazed: 23-25 lbs/ sqft; 112- 122 kg/sqm

Standard Live loading 100 PSF: Optional higher loading available

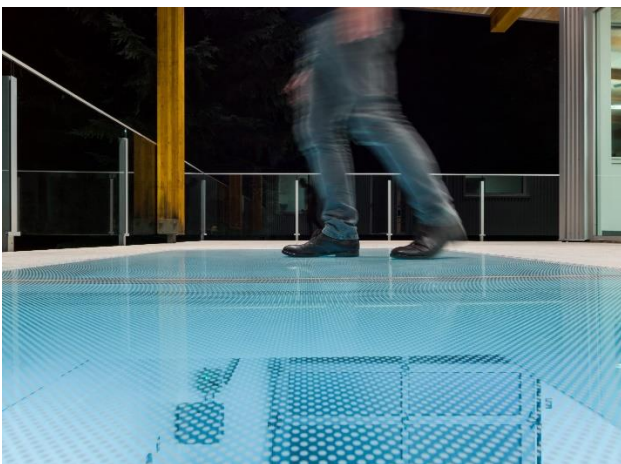
SHGC: 0.30 with standard clear interlayer.

*Higher energy performance available.



MAXIMUM DIMENSIONS

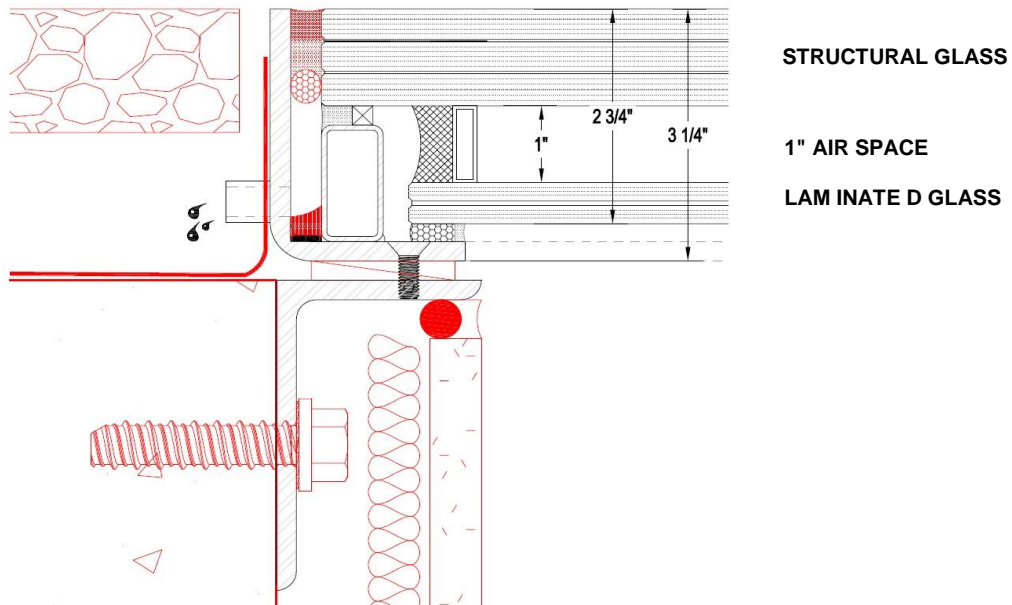
Application	Max Weight of Glass (lbs)	Max Width of Glass	Max Length of Glass	Installation
Horizontal	5500	236"	130"	Please request installation details



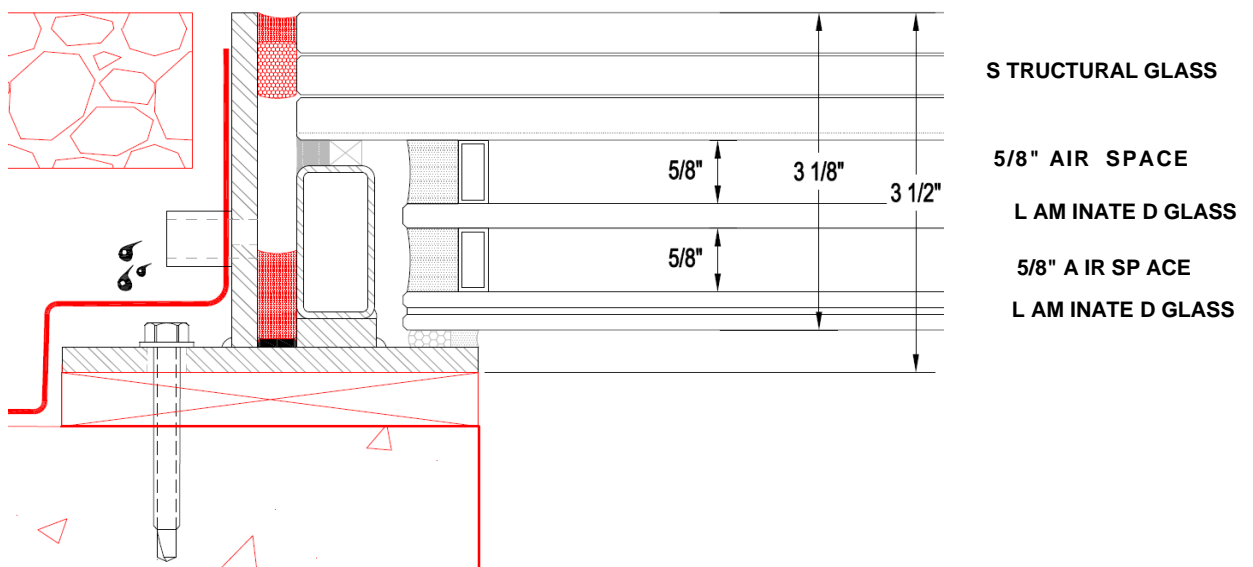


STANDARD DETAILS:

DOUBLE GLAZED FACE MOUNT



TRIPLE GLAZED TOP CURB MOUNT



ASK ABOUT OUR OPTIONAL SACRIFICIAL SHEET